

RECOM

GERMANY - HQ

Langenbrahm Str. Nr.1
45133 Essen,
Germany
T: +49 (0) 20186978094

GREECE

1 Poseidonos st.
173 42, Ag. Dimitrios
Athens, Greece
T: +30 210 9609940

USA

101 California st.
Suite 2710
San Francisco, CA 94111
T: +1 415 3657148

UK

Level 17,
69 Old Broad st.
London EC2M 1QS
T: +44 (0) 2075628982

ITALY

Milano (MI) Corso
Venezia 3
Cap 20121, Italy

JAPAN

ACE Kudan building 5F
Kudan Minami 2-2-1
Chiyoda-Ku Tokyo 102-0074
T: +81 3 32637225

AUSTRALIA

Level 1/504 Spencer st.
West Melbourne
Victoria Australia 3003
T: +613 93264444

ROMANIA

Calea Bucurestilor 3A
075100 Otopeni
Ifov, Romania
T: +40 374305792

UKRAINE

Kirgiskaya st. 9-11/50
61022
Kharkiv, Ukraine
T: +380 631653401

SINGAPORE

6 Shenton Way,
Tower One, #32-01,
068909 Singapore
T: +65 85522733

- RECOM established in 2007. Has become **second largest European PV module manufacturing company**
- Prominent presence in the **global markets**
- Annual capacity of **1.5 GW globally**
- **High quality PV modules** and competitive pricing
- **Automated & robotic assembly lines** and fully integrated production process
- Unparalleled level of **customer support**
- **Strong financial base**
- Offices in **Germany** (Headquarters), **USA, UK, Japan, Australia, Greece, Romania, Hong Kong and Singapore**
- Covers 27 countries

Vision and Ambitions

- Fill the gap in Solar Industry
- **Vertically Integrated** Development
- **EPC & Manufacturing** services and products
- **Innovative Engineering** and Technology, **Quality = Key**
- Financial Solidity
- Superior **Customer Care**



RECOM is an esteemed member of international **Solar Energy Industry Associations around the world**, a fact that further confirms our long term commitment and our positioning as “Thought Leaders” in the market.

Members of:



Board of Directors of:



RECOM Group offers a variety of PV module series including the following:

- **Amur Leopard** – Poly 60/72 cells (250-270W/300-320W)
- **Black Panther** – Mono 60 cells (250-280W)

New Series:

- **Glass Glass** – Mono/Poly
- **Smart Series** – Mono/Poly
- **1.500 Volt Series** – Poly 60/72 cells (250-270W/300-320W)

Advantages at a Glance

- **No Anti-Dumping Duties** in EU and USA for **Made in Italy and Korea** modules
- **European engineering** and meticulous quality control
- Product testing & certifications issued by **world-class auditors**
- Financial Solidity – Approved by **International 1st class banks** worldwide

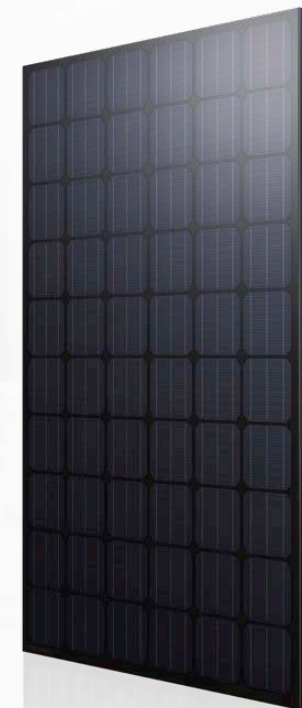
All our modules undergo **rigorous quality controls at every phase** of production and are certified by independent testing institutions.

Black Panther – Mono (60 cells)

Key Benefits: Exceptional aesthetics, Guaranteed positive tolerance up to 5W, Self-cleaning & anti-reflective micro-structured glass, Temperature Coefficient of Pmax -0.40%/ °C, Fully certified product

Electrical Characteristics				
Rated Power	250W	260W	270W	280W
Power Tolerance	0%/+5W	0%/+5W	0%/+5W	0%/+5W
Max. Power Voltage	31.30V	31.70V	32.12V	32.50V
Max. Power Current	8.09A	8.32A	8.45A	8.67A
Short Circuit Current	8.51A	8.66A	8.78A	8.99A
Module Efficiency	15.4%	16.0%	16.6%	17.2%

Mechanical Characteristics	
Dimensions	1640mm x 992mm x 35mm
Frame	Anodized Aluminum
Weight	19kgs
Front Glass	3.2mm AR low iron tempered glass



Amur Leopard – Poly 60/72 cells (250-270W/300-320W)

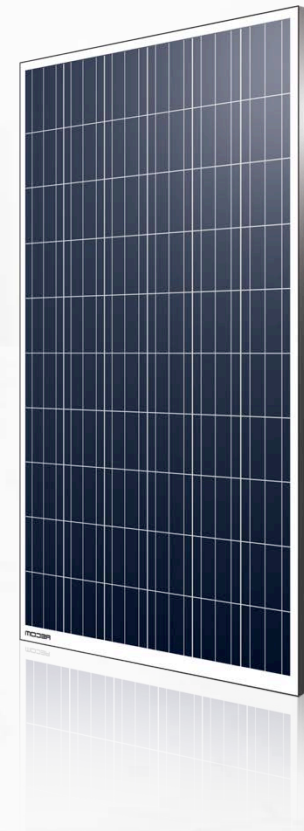
Key Benefits: High quality, Aesthetically pleasant, Guaranteed positive tolerance up to 5W, Self-cleaning & anti-reflective micro-structured glass, Temperature Coefficient of Pmax $-0.39\%/^{\circ}\text{C}$, Fully certified product

Electrical Characteristics of the best selling Poly modules

Rated Power	60 Cells - 250W	72 Cells - 310W
Power Tolerance	0%/+5W	0%/+5W
Max. Power Voltage	30.20V	37.00V
Max. Power Current	8.35A	8.42A
Short Circuit Current	8.92A	8.92A
Module Efficiency	15.4%	16.0%

Mechanical Characteristics

Dimensions	1640mm x 992mm x 35mm (60 cells) 1956mm x 992mm x 40mm (72 cells)
Frame	Anodized Aluminum
Weight	19kgs (60 cells) & 24kgs (72 cells)
Front Glass	3.2mm AR low iron tempered glass



1. The recently acquired facility of Recom Group in **Northern Italy** has an annual production **capacity of 200MW** of high technology cells
2. The main advantage is the **available machinery** and also the **highly specialized personnel**
3. Indicative Equipment List:
 - Applied **Baccini SoftLine Automatic Printing, Drying, Testing and Laser Systems**
 - **STANGL semiconductor Equipment AG**. Stangl LINEA WL-ISOTEX3000 - Inline Wet Process Equipment for Edge Isolation / Emitter Etching and Oxide Etching of c-Si wafer
 - SEMCO Engineering. **Automated Wet Process** bench solar cell - Manufacturing Project cells
4. **European know-how**, experience and quality
5. Opportunity to take **advantage of Anti-Dumping Duties**
6. Production of **high efficiency cells**
7. Significant enhancement in **profit margins**



RECOM Group has up to now **cooperated in many projects and partnership** agreements with the main **EPC, developers and financial institutions** globally

EPC & Developers



Financial Institutions



GE
Energy Financial Services



J.P.Morgan



Volksbanken
Raiffeisenbanken



Markets

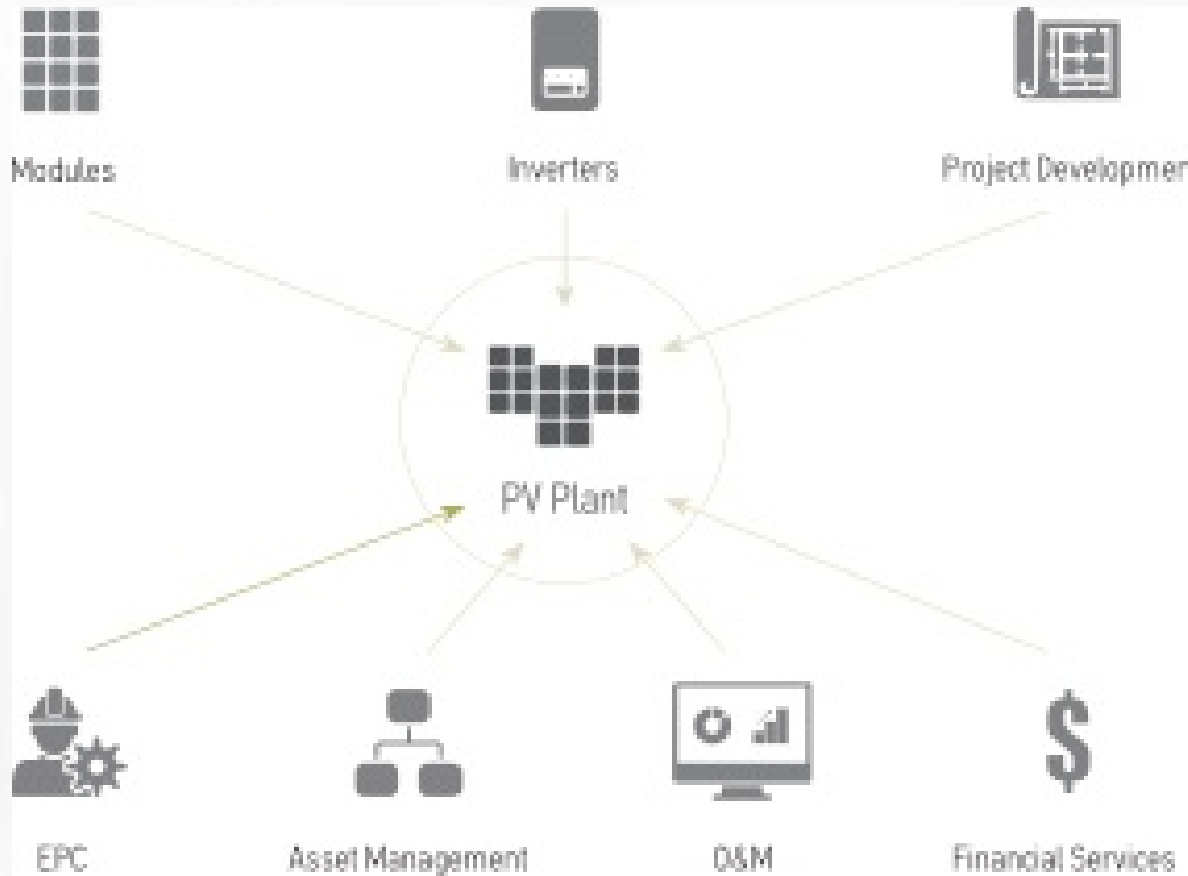
- RECOM Group is active in **all the stages of the value chain** of project development:



- Successful track record in **project development in Europe, USA and Latin America** in cooperation with developers, private investors and investment funds
- Taking advantage of the opportunity to be active in all the stages of the value chain of project development and **cooperate with investment parties looking for a return based on a steady cash flow** stream during the lifecycle of a PV project
- Extensive **financial engineering** skills
- Construction of projects** in Europe and USA



360° Solar Turnkey Solutions



2014

Part of the **26.5 MW sold to SPI Solar for U.S. \$91,780,000** have been developed from our team. In addition we **advised SinSin management** for specific matters referring to the projects

<http://www.marketwatch.com/story/spi-announces-agreement-to-acquire-2657-megawatts-of-solar-pv-projects-in-greece-2014-09-09>)

2013

- **14MW project developed and licensed** by our Team is electrified. The said project has been **sold to China Three Gorges Corporation** <http://www.ctgpc.com>
- **New substation (capacity up to 200MWp) developed and licensed** by our Team is in operation. The said project has been sold to China Three Gorges Corporation
- Option agreement for a **40MW solar power plant** has been signed with a yet undisclosed third party
- **Sale of a 8MW PV park, developed and licensed** by our Team, to SinSin Solar Capital. The said company belongs to Xinxing Cathay International Group Co., Ltd. <http://english.xx cig.com/index.htm>

- ✓ The **Anti-Dumping Duties offer opportunities of successful cooperation** in the fields of PV cells and **panels produced in Europe**. These opportunities can be maximized in the cases of projects in Europe and USA
- ✓ **Leading edge technology** in comparison with the competition
- ✓ The **geographical coverage can be global** – Exploit the favorable approach to solar
- ✓ Extensive **opportunities in Turkey, Latin America, USA and India**
- ✓ A **large Pipeline to be exploited** and discussed further

RECOM striving to continuously raise the bar on the quality and value of its services, has engaged two highly esteemed organizations

- **Deloitte is the global financial advisor** for RECOM, offering always **optimized financial structures**, verifying and improving our financial models.
- **Clifford Chance is the global legal advisor** for RECOM, offering “equitas” and “gladius” whenever and wherever it is required.

RECOM IS THE STRATEGIC PARTNER OF ANY EQUITY INVESTOR GLOBALLY, WHICH CAN GET INVESTEMENT IN SOLAR PROJECTS ONE STEP FURTHER, OFFERING HIGH RETURNS, SECURITY AND TRANSPARENCY IN EVERY STEP ALONG WITH REDUCTION OF THE CARBON FOOTPRINT AND A BETTER ENVIRONMENT FOR ALL OF US.